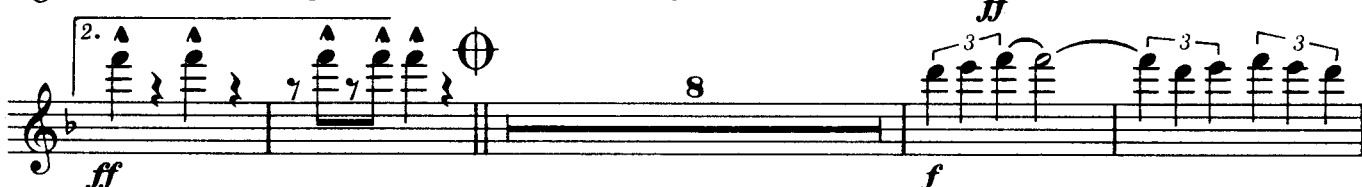
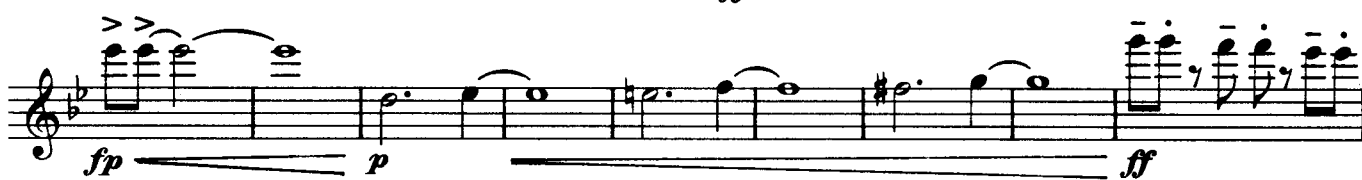
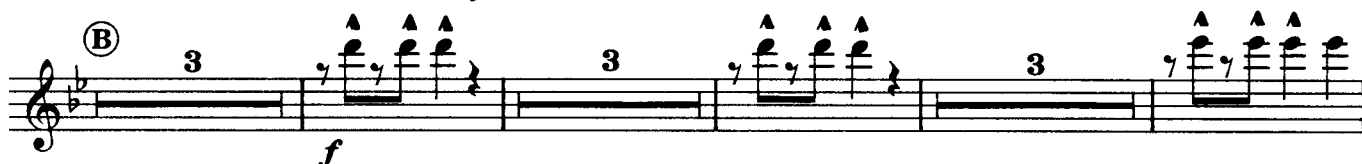


Mambo

07 - 690 - 05

3



ff

A 11 **f** Mam-bo **ff**

B 3 **f** 3 3 3

Mam-bo **ff** **C**

fp **p** **ff**

fp **f** 3 **D** Sing: Wir tan-zen **mf**

Mam-bo ja im-mer Mam-bo wir spie-len Mam-bo play: **ff**

2. **ff** 8 **f**

D.C. con rep. **E** **f**

Mam-bo **ff**

ff

Bass

mf

Trp.

f

f

Mam-bo

ff

f

Mam-bo

ff

fp

p

ff

fp

f

2

D

mf

ff

1.

2.

ff

f

1. Pos.

f

D. C.

con rep.

ff

Mam-bo

ff

Viva Brasil

Manfred Schneider

Mambo

07-690-01

Musical score for "Mambo" by Johann Sebastian Bach. The score is written for piano and voice. It features various dynamics (ff, mf, f, p, fp) and articulations (accents, slurs, triplets). The score includes a vocal line with lyrics in German: "Sing: Wir tan-zen", "Mam-bo", "ja im-mer Mam-bo", "wir spie-len Mam-bo", and "Mam-bo". The score is divided into sections labeled A, B, C, D, and E. The key signature is one sharp (F#), and the time signature is 4/4. The score includes a repeat sign and a double bar line with a repeat sign. The score is written in a single system with multiple staves.

Musical score for "Mambo" by Astor Piazzolla. The score is written for piano and voice. It features various musical notations including dynamics (ff, mf, f, p), articulation (accents, slurs), and phrasing. The lyrics are in German: "ja im-mer Mam-bo", "wir spie-len Mam-bo", and "Sing: Wir tan-zen Mam-bo". The score includes a section marked "D.C. con rep." and a section marked "2. Flgh.". The key signature is one sharp (F#), and the time signature is 4/4.

A *ff* *mf* *f*

Mam-bo **B** *ff* *f*

Mam-bo **C** *ff* *fp* *p* *fp*

D Sing: Wir tan-zen Mam-bo
ja im-mer Mam-bo *mf* wir spie-len Mam-bo play: *ff* *ff*

f 2. Flgh. *f*

E *f* Mam-bo *ff*

D. C. con rep. $\oplus - \oplus$

Viva Brasil

Manfred Schneider

Mambo 07 - 690

Bass

A Trp. *ff* *mf* *f*

B Mam-bo *ff* *f*

C Mam-bo *ff* *fp* *p* *f*

D *mf* *ff* *f*

E *f*

1. Pos.

D. C. con rep.

Mam-bo *ff*

Musical score for "Mambo" by Carlos Gardel. The score is written for piano and voice. It features various musical notations including dynamics (ff, mf, f, fp, p), articulation (accents, slurs), and phrasing. The lyrics "Mambo" are repeated throughout the piece. The score is divided into sections labeled A, B, C, D, and E.

The score begins with a piano introduction marked *ff* (fortissimo). The first vocal entry is marked *mf* (mezzo-forte). The piano accompaniment is marked *f* (forte). The lyrics "Mambo" are repeated throughout the piece. The score is divided into sections labeled A, B, C, D, and E.

The score includes various musical notations such as accents, slurs, and phrasing. The dynamics range from *ff* (fortissimo) to *p* (piano). The tempo is indicated by the number of notes per measure, which is 12/8. The key signature is one sharp (F#).

The score concludes with a double bar line and the instruction "D. C. con rep." (Da Capo con repetition). The final section is marked *f* (forte).

Musical score for "Mambo" by Carlos Gardel. The score is written for piano and guitar. It features various musical notations including dynamics (ff, mf, f, p, fp), articulation (accents, slurs), and performance instructions (Mambo, D. C. con rep.). The score is divided into sections labeled A, B, C, D, and E. The key signature is one sharp (F#), and the time signature is 2/4. The score includes a variety of rhythmic patterns, including triplets and syncopation.

Viva Brasil

Mambo 07-690-23

© Copyright MCMXC by Musikverlag S. Rundel · D-7956 Rot an der Rot

Artikel-Nr. 1592

Musical score for "Mambo" by Carlos Gardel. The score is written for piano and voice. It features various musical notations including dynamics (ff, mf, f, fp, p), articulation (accents, slurs), and phrasing. The lyrics "Mambo" are repeated throughout the piece. The score is divided into sections labeled A, B, C, D, and E.

The score begins with a piano introduction marked *ff*. The first vocal entry is marked *mf*. The piano accompaniment features a rhythmic pattern of eighth and sixteenth notes. The lyrics "Mambo" are repeated. The score includes various musical notations such as slurs, accents, and phrasing. The piece concludes with a final piano flourish marked *ff*.

Mambo

07 - 690 - 48

ff **mf** **f** **ff** **fp** **p** **ff** **mf** **ff** **f** **ff** **D.C. con rep.** **ff** **Mam-bo** **ff**

ff 3

f (A)

Mam-bo

ff 3 **f** 3

Mam-bo **ff** (C)

fp **p**

ff **fp** **f** **mf** Sax.

(D) Sing: Wir tan-zen Mam-bo ja im-mer Mam-bo wir spie-len Mam-bo play: **mf**

1. **ff** 2. **ff** **f**

f 1. Flgh.

D.C. con rep. - - - (E) **f**

Mam-bo **ff**

ff

A **f**

Mam-bo

B **ff** **f** **3** **3** **3**

Mam-bo **C** **ff**

fp **p**

ff **fp** **f** **mf Sax.**

D Sing: Wir tan-zen Mam-bo ja im-mer Mam-bo wir spie-len Mam-bo play:

mf

I. **ff** **2.** **ff** **f** **3** **3** **3**

f **2. Flgh.**

D.C. con rep. $\oplus - \oplus$

E **f**

Mam-bo **ff**

ff 3

f (A)

Mam-bo

ff 3 **f** 3

Mam-bo **ff** (C)

fp **p**

ff **fp** **f** Sax.

(D) Sing: Wir tan-zen Mam-bo ja im-mer Mam-bo wir spie-len Mam-bo play: **mf**

1. **ff** 2. **ff** **f**

f 1. Flgh.

D.C. con rep. - - -

f (E)

Mam-bo

ff

ff

A **f**

Mam-bo

B **ff** **f**

Mam-bo **C** **ff**

fp **p**

ff **fp** **f** Sax. **mf**

D Sing: Wir tan-zen Mam-bo ja im-mer Mam-bo wir spie-len Mam-bo play: **mf**

I. **ff** **ff** **f**

2. **f**

f 2. Flgh.

D.C. con rep. **⊕ - ⊕**

E **f**

Mam-bo **ff**

Manfred Schneider

1. Horn

ff *mf* *f*

f

Mam-bo

ff *f*

Mam-bo

ff

fp *p* *ff*

fp *f* *mf*

mf *ff*

ff *f*

D. C. con rep.

f

Mam-bo

ff

Mambo

07 - 6 9 0 - 50

ff mf f 2. Horn

f

Mam-bo ff f

Mam-bo ff

fp p ff

fp f mf

mf ff

ff f

D. C. con rep. $\oplus - \oplus$

f

Mam-bo ff

Mambo

07 - 6 9 0 - 52

ff mf f 3. Horn

f

Mam-bo ff f

Mam-bo ff

fp p ff

fp f mf

mf ff

ff f

D. C. con rep. $\oplus - \oplus$

f

Mam-bo ff

Viva Brasil

Manfred Schneider

Mambo 07 - 690

Bass

A Trp.

Mam-bo **B**

C

D

E

1. Pos.

D. C. con rep.

Mam-bo

Viva Brasil

Manfred Schneider

Mambo 07-690-37

Musical score for the bass line of "Mambo" by Carlos Gardel. The score is written in bass clef with a key signature of one sharp (F#). It includes various dynamics (ff, mf, f, fp, cresc., D.C. con rep.) and articulations (accents, slurs, slurs with dots). The score is divided into sections labeled A, B, C, D, and E. Section A starts with a forte (ff) dynamic and a series of eighth notes. Section B features a "Mambo" section with a forte (ff) dynamic and a series of eighth notes. Section C includes a "Mambo" section with a forte (ff) dynamic and a series of eighth notes. Section D features a "Mambo" section with a forte (ff) dynamic and a series of eighth notes. Section E features a "Mambo" section with a forte (ff) dynamic and a series of eighth notes. The score concludes with a final forte (ff) dynamic.

Viva Brasil

String bass

Manfred Schneider

Mambo

07-690-41

[illegible]

Staff 1: *ff* Gm Cm D⁷/₄ D⁷ D⁷ Gm *mf*

Staff 2: Gm *f* D⁷ Gm G⁷

Staff 3: Cm Gm D⁷ Gm Mam-bo *ff* *f* Gm **(B)**

Staff 4: D⁷ Gm G⁷ Cm Gm

Staff 5: D⁷ Gm Mam-bo *ff* Gm F E^b D⁴ D E^b7 *fp*

Staff 6: Gm *p* A^b A B^b H C *ff* Gm F E^b

Staff 7: D⁴ D E^b7 *fp* C⁷ *f* F⁶ *mf*

Staff 8: **(D)** *mf* C⁷ F C⁷ *ff* F⁶

Staff 9: *ff* F⁶ *f* B^b Am Gm C⁷

Staff 10: F Gm F^o F B^b Am G⁷

Staff 11: C⁷ B^b6 E^b7 D⁷ **D. C. con rep.** ⊕ - ⊕

Staff 12: **(E)** *f* B^bm F⁷ B^bm

Staff 13: B^b7 E^bm B^bm F⁷ B^bm Mam-bo *ff* B^b6

Manfred Schneider

07-690-57

Musical score for the bass line of "Mambo" by Carlos Puebla. The score is written in bass clef with a key signature of two flats (B-flat and E-flat). The tempo is marked "Allegretto" and the time signature is 2/4. The score includes various dynamics such as *ff* (fortissimo), *mf* (mezzo-forte), *f* (forte), *p* (piano), and *fp* (fortissimo-piano). It also features articulations like accents (^) and slurs. The score is divided into sections labeled A, B, C, D, and E. Section A includes a first ending (1.) and a second ending (2.). Section B includes a first ending (1.) and a second ending (2.). Section C includes a first ending (1.) and a second ending (2.). Section D includes a first ending (1.) and a second ending (2.). Section E includes a first ending (1.) and a second ending (2.). The score concludes with a double bar line and a repeat sign.

Viva Brasil

Manfred Schneider

Mambo

07 - 6 9 0 . C 1

ff 1 2 3 4 5 6 7 8 9 10

f 11 12 13 14 Mambo *ff* *f* 1

2 3 4 5 6 7 8 9 10 11 12 13 14

Mambo *ff* *fp* 1 2 3 4 5

p *ff* 1 2 3 4 5 6

fp *f* *mf* 1 2 3 4 5 6

mf fill in 1 2 3 4 5 6 7

ff 1 2 3 4 5 6

f 1 2 3 4 5 6

f 10 11 12 13 14 Mambo *ff*

D. C. con rep.



Keyboards

(Orgel-Piano)

Viva Brasil

Manfred Schneider

Mambo

07 - 690 - 62

$\approx 100-108$

ff Gm Cm D⁷/₄ D⁷ Gm **mf**

f Gm D⁷

Gm G⁷ Cm Gm

Mam-bo D⁷ Gm **ff** **f** Gm D⁷

Gm G⁷

Mam-bo Cm Gm D⁷ Gm **ff** **2** **C**

Synth. Effekt **fp** E^b7 **p** Gm A^b/G **cresc.** A/G - B^b/G - C^b/G - C/G - **ff**

2 **3** **D** sing: Wir tan-zen Mam-bo **mf** C⁷

ja im-mer Mam-bo **fp** F C⁷ wir spie-len Mam-bo play: **ff** F⁶ **ff** F⁶

f B^b Am Gm C⁷ F Gm

F^o F B^b Am G⁷ C⁷

D.C. con rep. $\oplus - \oplus$ **E** B^bm **f**

F⁷ B^bm B^b7

Mam-bo E^bm B^bm F⁷ B^bm **ff** B^b6